



**PAPALOTLA**

SEMILLAS



## **COBRA®**

Brachiaria hybrid cv.  
CIAT BR02/1794

Its erect growth makes cutting easy. Even when mature the grass remains tender. Ideal as a cut-and-carry grass and for hay and silage production. Cobra responds exceptionally well to fertilization in intensive systems.

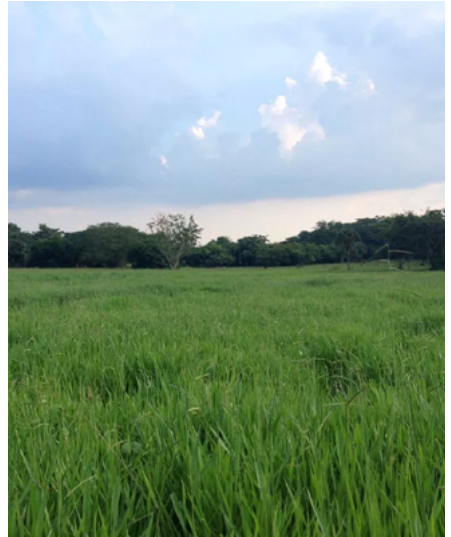
# COBRA®

Brachiaria hybrid cv. CIAT BR02/1794



## The Cobra Hybrid

The Cobra hybrid is the best alternative for achieving high green and dry matter production in intensive cut-and-carry grass systems, not only offering the livestock fresh grass but also producing hay and silage. This hybrid has also proven to be highly efficient for grazing when farms need to increase the amount of grass available for animal consumption.



## Biomass production

Cobra grass has the ability to produce green matter to feed animals in a relatively short time, presenting a high growth rate in cuttings at 45-day intervals, surpassing other forages such as sorghum and with more nutritional quality.

These qualities translate into improved animal production due to the increased forage availability, offering high-quality protein and excellent digestibility.



# COBRA®

Brachiaria hybrid cv. CIAT BR02/1794

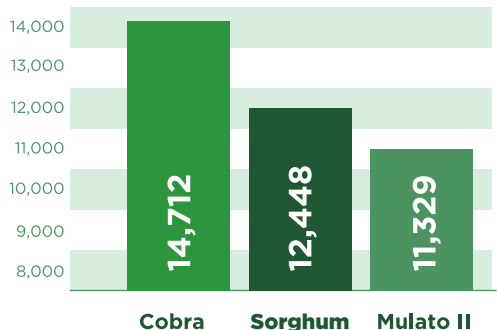


## Growth and production

In trials carried out at the Tropical Pastures Research Center (CIPAT) in Mexico and in Costa Rica, Cobra has managed to produce more dry matter when cut after 30 to 45 days, surpassing forage sorghum and Mulato II.

Cobra's advantage over other cutting materials is that it produces more forage quantity with high protein percentage, high digestibility (69%) and high palatability, therefore animals prefer this hybrid over other forages like pennisetum and sorghum.

### Forage production KgMS/hect 6 months



Source: La Esperanza, Chiapas, Mexico 2015



## Growth type

Unlike Mulato II and Cayman, the Cobra grass grows upright in bunches with well defined culms, which are ideal for cutting. This growth type facilitates recovery from intensive cutting.

Additionally, under intensive production systems (irrigation and fertilizing) Cobra can achieve a 6 to 8 kg production of green matter per square meter every 60 days; considering this, its great forage production and quality make of Cobra an excellent alternative for livestock.

## Cobra grass structure

Erect stems

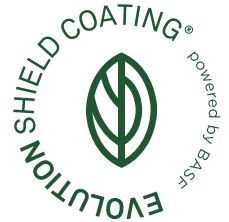
Defined tussock

Main root



## EVOLUTION® Shield Coating

1. High quality pure seed
2. Speedygerm® assures germination
3. Protective layer with Regent® Ultra fungicide and insecticide treatment\*
4. Micronutrients aiding seedling health
5. Distinctive color identifying Papalotla Hybrid
6. Smooth finish for ease of sowing



# EVOLUTION® Shield Coating

EVOLUTION® Shield Coating is the process through which the seeds are coated with different layers to vary their shape and improve their response to diverse conditions.

This process allows Papalotla to offer a product, which is easy to use with distinct sowing methods. Throughout the different layers value is added, which improve germination and seed protection against adverse environmental conditions. It also allows for better soil contact which results in better plant establishment.

Before coating, each seed goes through a scarification process using our patented Speedygerm® treatment. This guarantees the highest degree of seed purity and germination potential.

## EVOLUTION® coating advantages

- Easier sowing.
- Precise amount of seeds per kg assuring good stand establishment at the recommended dosis per area.
- Protects the seed during adverse environmental conditions.
- Micronutrient, fungicide and insecticide treatment comes included thus minimizing risk to the end user.
- Only pure seeds are coated, avoiding risk of introducing weeds and soil to your ranch.
- Unique color coating assures our clients receive our proven genuine Papalotla Hybrids.

\*Regent® Ultra:  
Fipronil + Methyl Thiophanate + Pyraclostrobin



# COBRA®

Brachiaria hybrid cv. CIAT BR02/1794



## Key features



**CUT AND  
CARRY**



**HAY AND  
SILAGE**



**PALATABILITY**



**PEST  
RESISTANCE**



**DROUGHT  
TOLERANCE**



**SHADE  
TOLERANCE**



**GRAZING**

**SEMILLAS PAPALOTLA S.A. DE C.V.**

-

**Orizaba 195, Colonia Roma  
CP. 06700, Mexico City, MX  
t. 52 (55) 5265 9870  
mexico@grupopapalotla.com**

### IMPORTANT:

**COBRA is a protected trademark.  
CIAT BR02/1794 is a protected variety.  
Unauthorized selling and distribution  
is prohibited.**

**Semillas Papalotla S.A. de C.V. © 2019.  
All rights reserved.**



Premio  
Nacional  
de Tecnología  
e Innovación®  
XVII Edición



**AUTHORIZED DISTRIBUTOR**

**TROPICAL SEEDS, LLC**

**2175 NW 24TH AVE.  
MIAMI, FLORIDA  
33142-7279 USA  
Phone: +1 954 7536301**

**grupopapalotla.com**